



**REBEL OFF ROAD SUMMIT SERIES FRONT BUMPER & SKID PLATE  
FOR JEEP WRANGLER JK/JL/GLADIATOR  
INSTALLATION INSTRUCTIONS**



**PLEASE READ ALL INSTALLATION INSTRUCTIONS CAREFULLY AND IN  
ENTIRETY PRIOR TO INSTALLING.**

**Approx. time required for installation: 2-3 hours**

**TOOLS REQUIRED:**

**1/2" DRIVE RATCHET  
3/4" SOCKET  
9/16" SOCKET  
3/4" WRENCH  
9/16" WRENCH  
5.5MM HEX KEY  
TELESCOPIC MAGNET (OPTIONAL)**

**MOVING BLANKET OR CARDBOARD  
MASKING OR PAINTERS TAPE**

**PARTS INCLUDED**

**QTY 1: FRONT BUMPER ASSEMBLY  
QTY 2: BUMPER L-BRACKETS**

**OPTIONAL PARTS:**

**QTY 1: SKID PLATE  
QTY 1: TRIANGULAR CRASH BAR INSERT  
QTY 1: BUMPER HOOP**

## **HARDWARE INCLUDED:**

### **Bumper hardware:**

QTY 2 - 1/2" x 1.5" BOLT GRADE 8  
QTY 2 - 1/2" FLAT WASHER GRADE 8  
QTY 4 - 3/8" x 1" BOLT GRADE 8  
QTY 4 - 3/8" FLAT WASHER  
QTY 8 - 1/2" NYLOCK NUT GRADE 8  
QTY 8 - 1/2" FLAT WASHER  
QTY 10 - PLASTIC HOOP CAPS

### **For all models:**

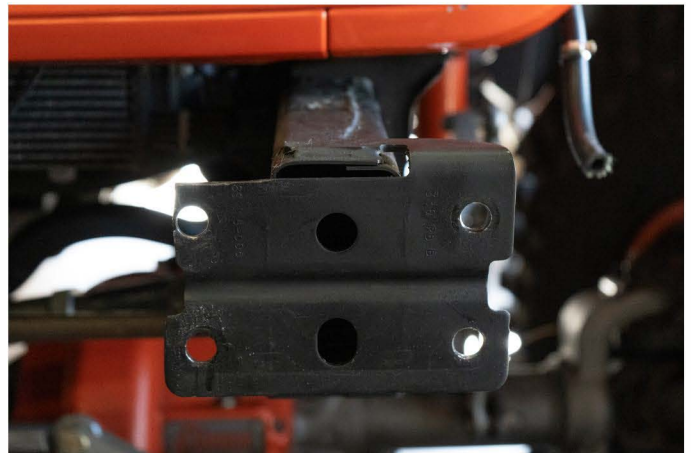
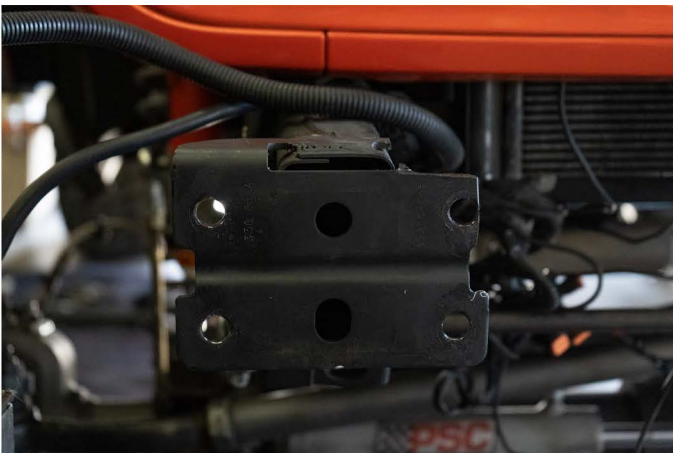
Remove the factory or current front bumper assembly, winch, lights, or other accessories. If installing on a Jeep JK, the factory vacuum pump must be relocated prior to installation.

If no winch is being installed, skip to Step 2.

If installing a winch, the frame horns may need to be modified. Measure the overall width of your winch and compare to the existing space between the frame horns. If the winch is wider than the gap, the frame horns will need to be modified for the winch to fit correctly in the bumper.

**Example:** In the photos below, the frame horns were modified to fit a Warn Zeon 12-S winch.

Cut the frame horns as necessary, ensuring the mounting holes on the frame are not damaged and still leave sufficient mounting surface for the hardware.



## **HARDWARE FOR OPTIONS:**

### **Skid plate:**

QTY 16 - 3/8" x 1" BOLT GRADE 8  
QTY 12 - 3/8" LOCK WASHER GRADE 8  
QTY 14 - 3/8" FLAT WASHER GRADE 8

### **Bumper Hoop:**

QTY 10 - 3/8" x 1" RECESSED HEX BOLTS  
QTY 10 - SERRATED FLANGE NUTS

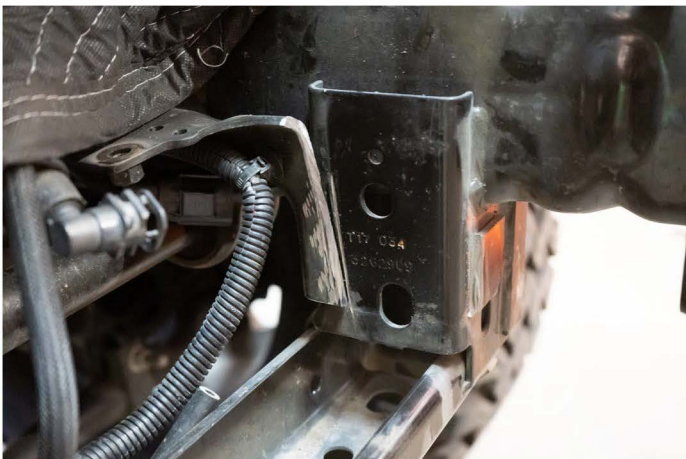
## Step 2:

***\*The instructions on this page ONLY pertain to 2012-2018 Jeep JK\*  
If installing on 2007-2011 Jeep JK, JL or Gladiator, skip to Step 3***

In order to install the bumper on a 2012-2018 Jeep JK, the front half of the vacuum pump bracket must be cut off. Using a paint pen or marker, draw two lines (shown in the image below with white marker) along the factory vacuum pump bracket on the driver's side frame crossmember.

Using a cut off wheel, cut along these lines and remove this piece of the vacuum pump bracket. No modification is necessary on the passenger side.

Insert the supplied T-plates into the slots on the crossmember bracket on both frame rails. These T-plates must be oriented as shown in the images below.





### Step 3:

*\*If no skid plate is being installed, skip to Step 5\**

**\*NOTE: The instructions on this page ONLY pertain to the following models:**

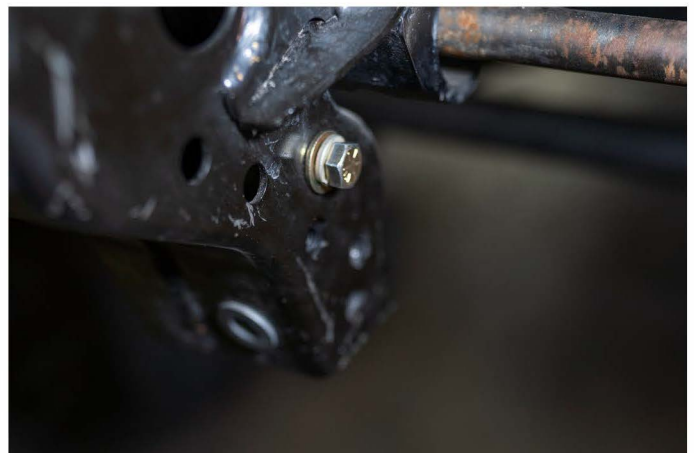
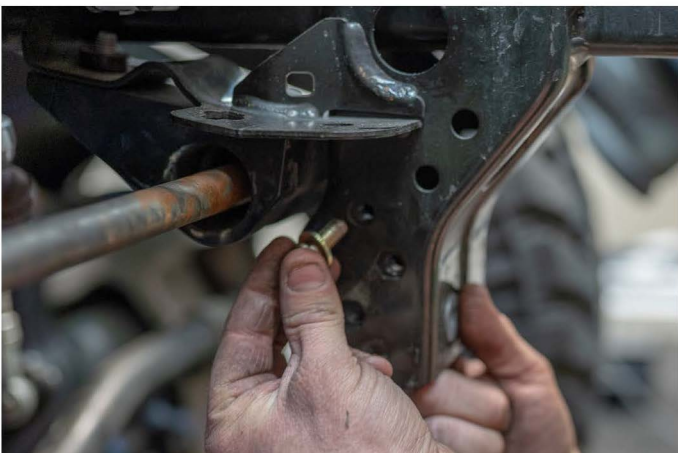
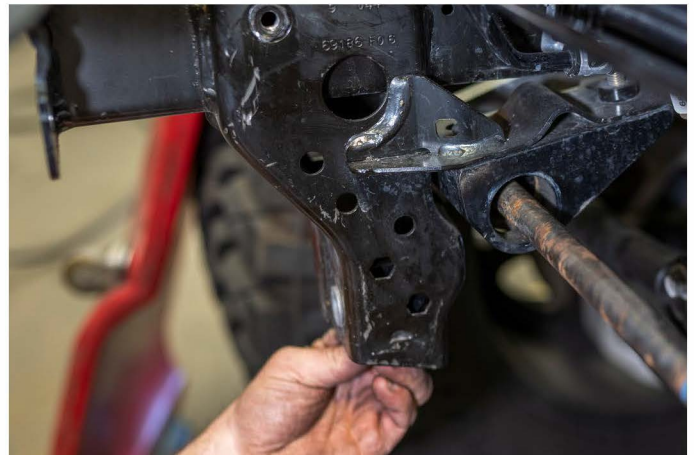
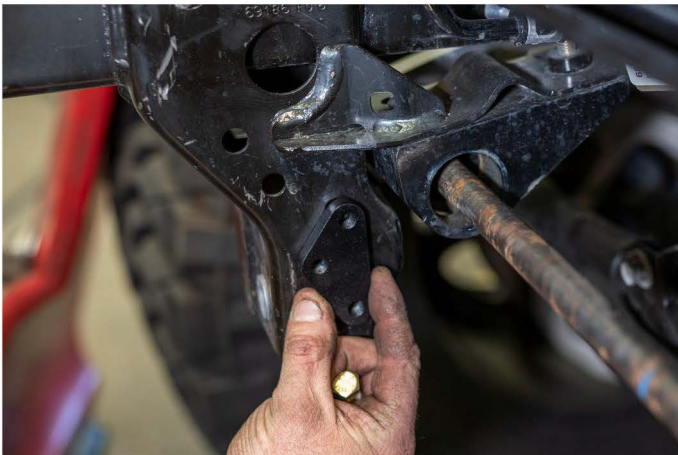
**2007-2018 Jeep JK (all models)**

**2019-current Jeep JL (NON-RUBICON ONLY)**

**2020-current Jeep Gladiator (NON-RUBICON ONLY)**

**Insert the supplied triangular crash bar insert into the bottom of the front crash bars. The photo below shows the orientation of the crash bar insert once it is in place, but it must be mounted to the inside of the crash bar.**

**Using the supplied 3/8" x 1" Grade 8 bolts, thread in the top bolts on each side only. Tighten down with a 1/2" ratchet and 9/16" socket.**



### Step 3 (continued):

*\*If no skid plate is being installed, skip to Step 5\**

**\*NOTE: The instructions on this page ONLY pertain to the following models:  
2019-current Jeep JL (RUBICON ONLY)  
2020-current Jeep Gladiator (RUBICON ONLY)**

Jeep JL and Gladiator RUBICON models have two factory bolts pre-installed in the left and right front crash bars. These bolts are secured to nutserts in the crash bars. The images below show a view of these nutserts from both the inboard and outboard side of the frame. The skid plate brackets will bolt to these nutserts directly, therefore the triangular crash bar insert included in the box will NOT be used on these applications.

Using a 16mm or 5/8 wrench, remove all four bolts from these nutserts and set them aside. You will use them later to mount the skid plate if equipped.

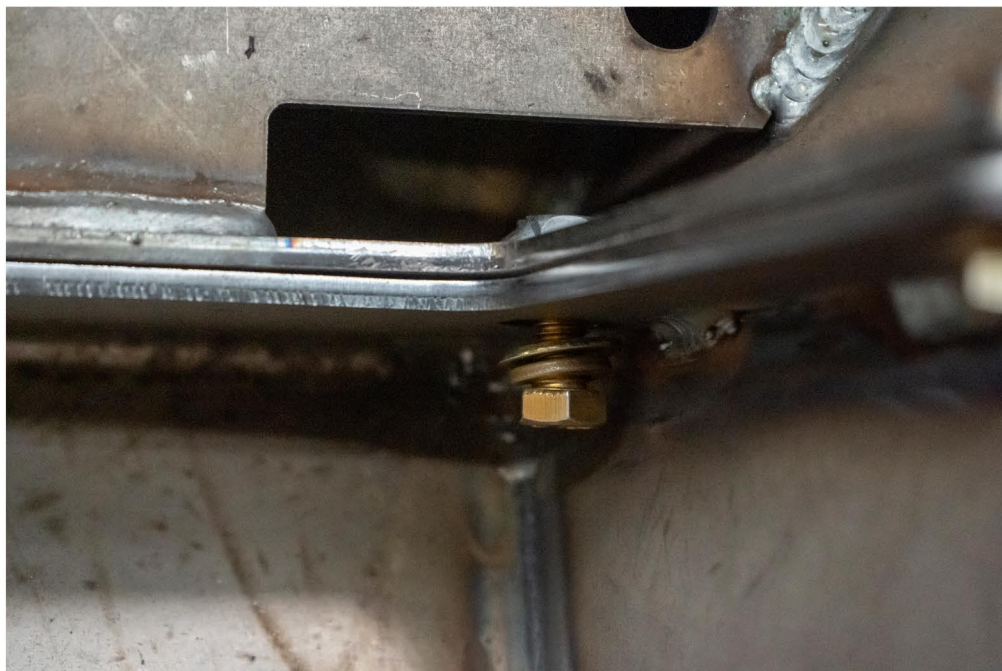




**Step 4:**

**Position the skid plate below the bumper, matching up the six mounting holes between them.**

**Using the supplied 3/8" x 1" Grade 8 bolts, 3/8" flat washers, and 3/8" lock washers, fasten the skid plate to the bumper. Tighten down each bolt ensuring a solid fit.**



#### **Step 4 (continued):**

***\*NOTE: The instructions on this page ONLY pertain to Jeep JK***

**Position the bumper (and skid, if installed) onto the frame, making sure the four studs on each side go through the factory holes in the frame horns.**

**Secure the bumper to the frame horns by threading the supplied 1/2" nylock nuts to the four studs on each side of the bumper. Begin by finger tightening.**

**Hand thread the supplied 1/2" x 13 Grade 8 bolts and flat washers through the tabs under the winch plate, and into the T-bars that were previously installed.**

**Once all the hardware is in place and the bumper is adjusted as necessary, proceed to tighten everything down with a 1/2" ratchet wrench and 3/4" and 9/16" sockets/wrenches.**





#### **Step 4 (continued):**

***\*NOTE: The instructions on this page ONLY pertain to Jeep JL and Gladiator.***

**Position the bumper (and skid, if installed) onto the frame, making sure the four studs on each side go through the factory holes in the frame horns.**

**Secure the bumper to the frame horns by threading the supplied 1/2" nylock nuts to the four studs on each side of the bumper. Begin by finger tightening.**

**Using the supplied 3/8" x 1" grade 8 bolts and flat washers, mount the supplied L-brackets to the holes in the bumper. Finger tighten only.**

**Adjust the bumper as necessary to install the supplied 3/8" x 1" grade 8 bolts and flat washers through the top of each L-bracket, and into the factory threaded holes in the side of the frame rails.**

**Once all the hardware is in place, proceed to tighten everything down with a 1/2" ratchet wrench and 3/4" and 9/16" sockets/wrenches.**



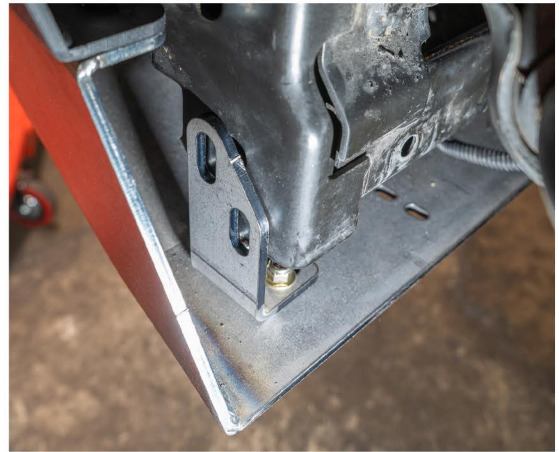
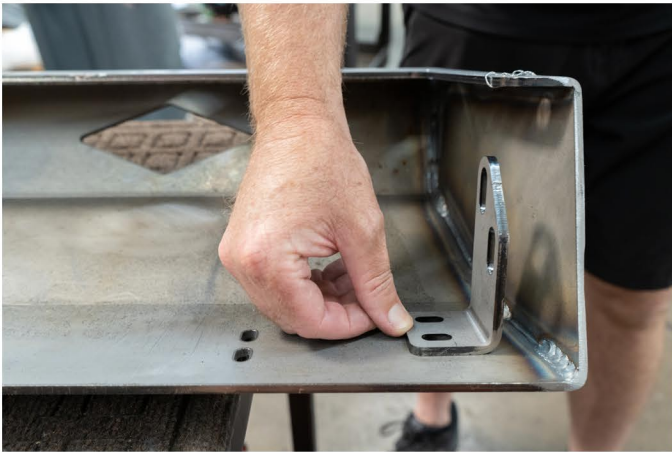


## Step 5:

***\*NOTE: Your Summit Series front skid plate has two sets of slotted holes drilled through each side of the bottom of the skid plate. If installing on a Jeep JK, use the outer holes. If installing on a Jeep JL or Gladiator, use the inner holes.***

**If you installed a skid plate, use the supplied 3/8" x 1" grade 8 bolts to secure the supplied skid plate L-brackets with slotted holes to the bottom of the skid plate. Finger tighten only. Use the supplied hardware to then secure the L-brackets and skid to the crash bars by threading them through the triangular crash bar threaded insert you installed earlier (JL and Gladiator Rubicon models will secure the skid to the factory nutserts instead of the triangular crash bar insert). Finger tighten only.**

**Jeep JK models will mount the L-bracket to the outboard side of the crash bars (see image below).**



**Jeep JL and Gladiator NON RUBICON models will mount the L-bracket to the inboard side of the crash bars (see image below).**

**JL and Gladiator RUBICON models will secure the L-brackets on the inboard side of the crash bars as well, but will use the factory hardware removed earlier to thread into the factory nutserts.**



**Step 5 (continued):**

**Adjust the bumper and skid as necessary to line up the L-brackets with the crash bars. Once adjusted, fully tighten all four bolts on each L-bracket.**

**Once the bumper and skid plate is secured to the frame, you can begin installing your winch, and any auxiliary lighting to it. We advise using masking or painters tape along the edge of the winch area to avoid scratching the powder coat while installing your winch.**





### Step 6:

If you purchased the stinger hoop, you can begin the installation by orienting the hoop mounting surface to the corresponding holes on the top plate of the bumper.

Using the supplied recessed 3/8" hex key bolts and serrated flange nuts, secure the stinger hoop to the bumper through all 10 holes. Finger tighten at first, then tighten down fully with a 5.5mm hex key and 9/16 wrench when all hardware is in place and hoop is adjusted correctly.



**We hope you enjoy your new Rebel Off Road Summit Series Front Bumper!**

**For a complete list of other Jeep armor we offer, please visit us at [www.RebelOffRoad.com](http://www.RebelOffRoad.com)**



**Be sure to REVIEW this product on our website, and tag @rebeloffroad in any of your social media posts using your new Summit Series Rear Bumper!**