



## **REBEL OFF ROAD XPLOR BED RACK FRIDGE/FREEZER MOUNT FOR 2020+ JEEP GLADIATOR INSTALLATION INSTRUCTIONS**



**PLEASE READ ALL INSTALLATION INSTRUCTIONS CAREFULLY AND IN  
ENTIRETY PRIOR TO INSTALLING.**

**Approx. time required for installation: 1 hour**

### **TOOLS REQUIRED:**

**1/2" DRIVE RATCHET  
3/8" DRIVE RATCHET  
9/16" SOCKET  
9/16" WRENCH  
3/4" SOCKET  
3/8" SOCKET  
1/8" HEX KEY**

### **PARTS INCLUDED**

**QTY 1: BASE PLATE  
QTY 1: DIAGONAL SUPPORT PLATE**

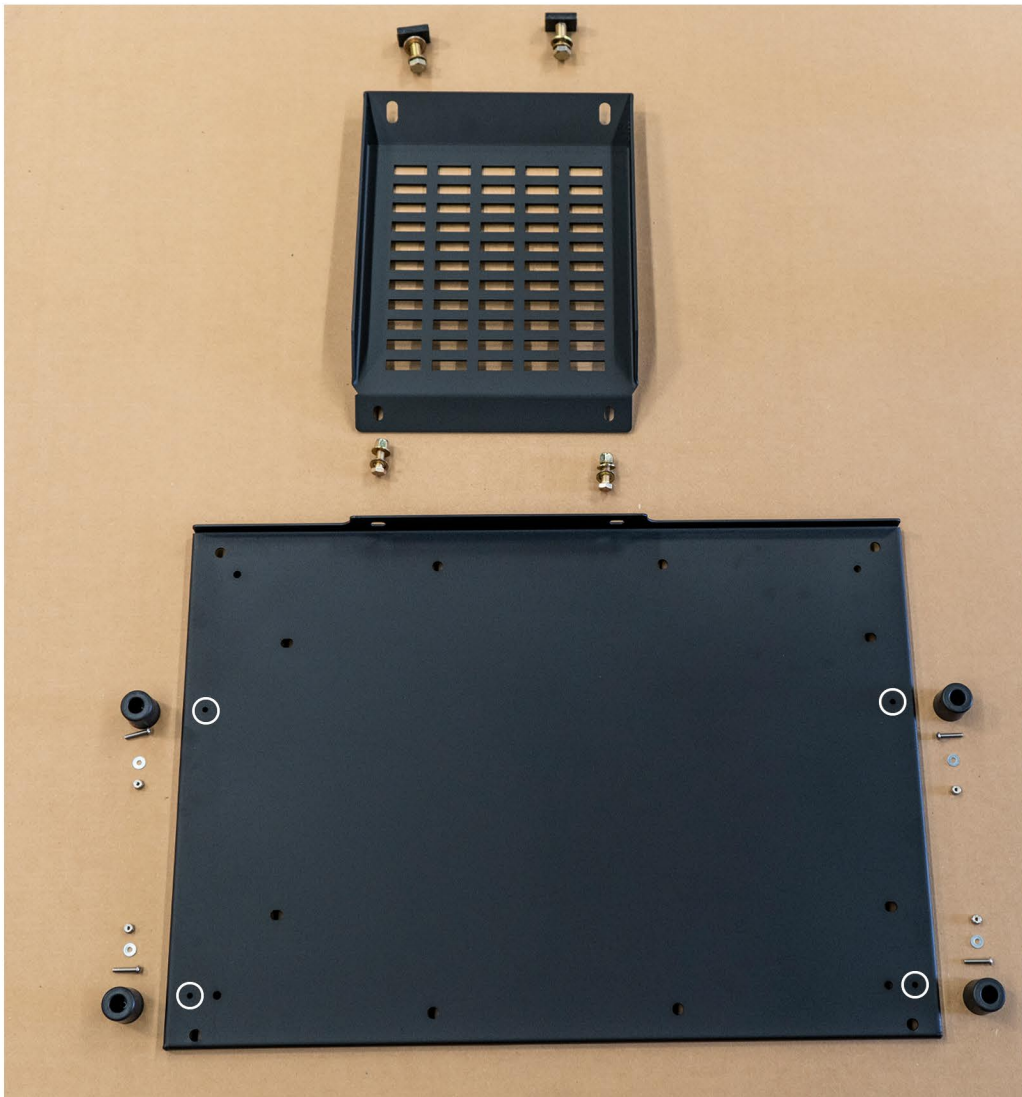
## HARDWARE INCLUDED:

QTY 2: CHANNEL NUT  
QTY 2: 1/2" GRADE 8 BOLT  
QTY 2: 1/2" FLAT WASHER  
QTY 2: 1/2" SPRING WASHER  
QTY 2: 3/8" GRADE 8 BOLT  
QTY 2: 3/8" GRADE 8 NYLOCK NUT  
QTY 2: 3/8" FLAT WASHER  
QTY 2: 3/8" SPRING WASHER

QTY 4: 1/4" BUTTON HEAD BOLT  
QTY 4: 1/4" FLAT WASHER  
QTY 4: 1/4" NYLOCK NUT  
QTY 4: RUBBER FEET

### Step 1:

Lay out all included components and hardware according to the image below. Notice the diagonal support plate is oriented so that the smaller slotted holes are towards the base plate, and the larger slotted holes mount to the bed rail system. The rubber feet will be installed to the bottom of the base plate using the four small holes circled in the image below.

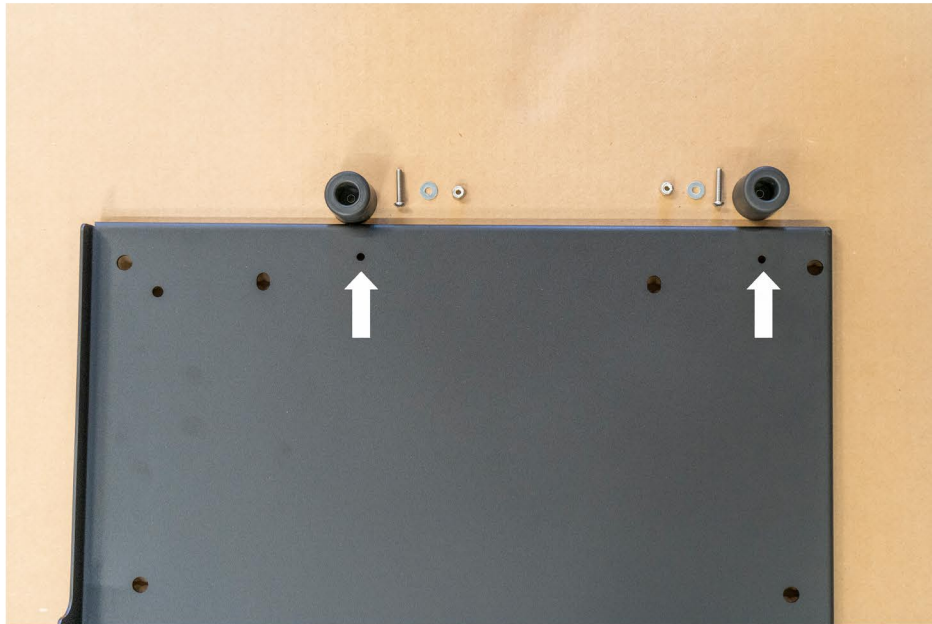


## Step 2:

Using the holes indicated by the arrows in the image below, install the rubber feet to the bottom of the base plate. Notice the orientation of the lip on the bottom image to correctly identify the bottom side of the base plate.

Use the 1/4" button head bolts, flat washers, and nylock nuts to secure the rubber feet to the base plate.

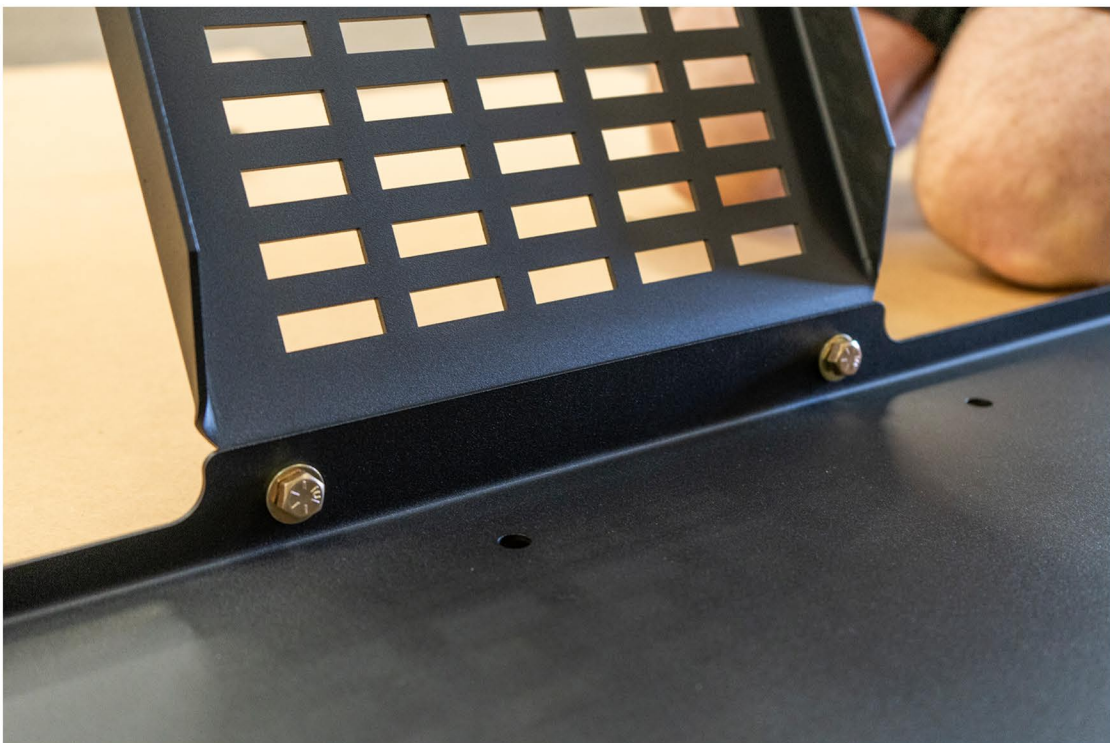
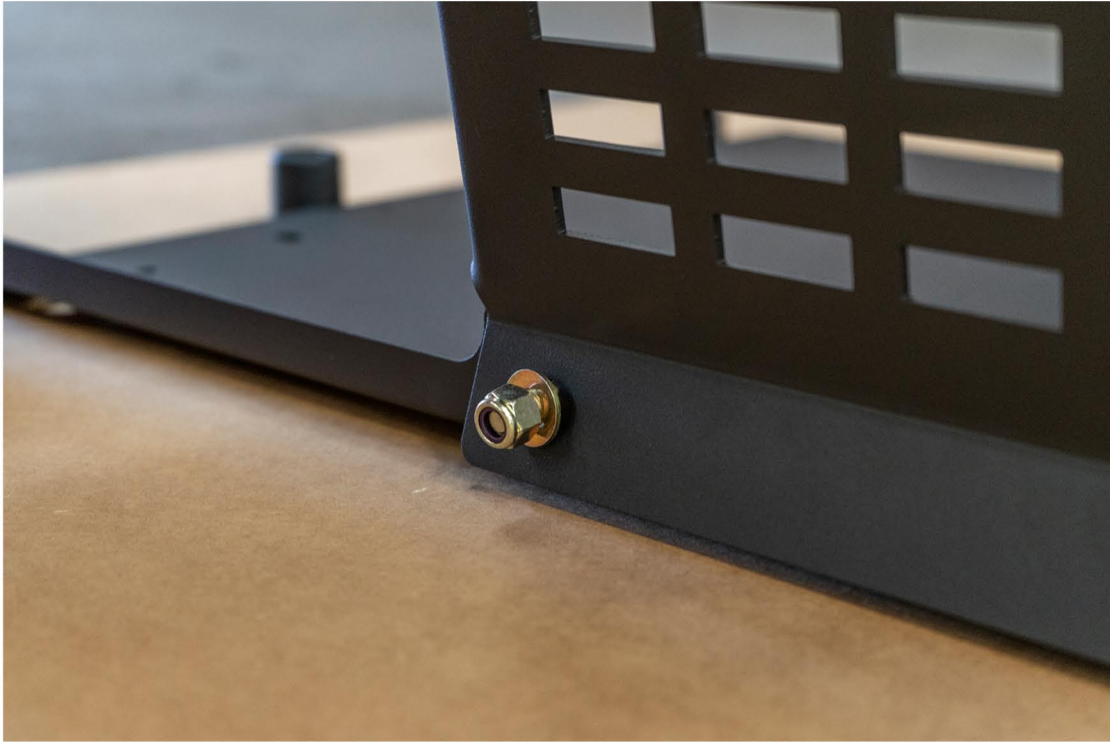
Repeat this step for all four rubber feet and fully tighten down the hardware.





### **Step 3:**

**Align the two small slotted holes on the diagonal support plate to the lip on the base plate. Secure the plate to the base using the supplied 3/8" Grade 8 bolts, nylock nuts, flat washers, and spring washers. Refer to the image below for proper orientation of the hardware. Fully tighten down the hardware so the diagonal support plate is secured firmly to the base plate.**



**Step 4:**

**Install the assembly to your bed rail. Keep in mind, if you already have an XPLORE Bed Rack system or other accessories that are bolted to your bed rail, you may need to remove and re-install them if they are in the way of this installation.**

**Locate where you plan to install the Fridge mount, and remove any hardware necessary to slide the two supplied channel nuts into your bed rail channel. Once the bed rail channel nuts are in place, orient the diagonal support plate so that you can secure it to the bed rail channel.**

**Using the supplied 1/2" Grade 8 bolts, lock washers, and flat washers, secure the angle plate to the channel nuts. Do not fully tighten to allow for adjustment.**

**Slide the Fridge mount assembly to the desired location along the bed rail. When in the desired location, begin fully tightening down the hardware to the bed rail.**

**You may now install your preferred Fridge/Freezer and slide to the base plate.**





**We hope you enjoy your new Rebel Off Road  
XPLOR Fridge/Freezer Mount!**

**For a complete list of accessories we offer  
for your XOLOR Bed Rack, please visit us at  
[www.RebelOffRoad.com](http://www.RebelOffRoad.com)**



**Be sure to REVIEW this product on our  
website, and tag @rebeloffroad in any of  
your social media posts using your new  
XPLOR Fridge/Freezer Mount!**