



**REBEL OFF ROAD SUMMIT SERIES FRONT BUMPER  
FOR JEEP WRANGLER JL + GLADIATOR JT  
INSTALLATION INSTRUCTIONS**



**PLEASE READ ALL INSTALLATION INSTRUCTIONS CAREFULLY AND IN  
ENTIRETY PRIOR TO INSTALLING.**

**Approx. time required for installation: 2-3 hours**

**TOOLS REQUIRED:**

**1/2" DRIVE RATCHET  
3/4" SOCKET  
9/16" SOCKET  
3/4" WRENCH  
9/16" WRENCH  
5.5MM HEX KEY  
TELESCOPIC MAGNET (OPTIONAL)**

**MOVING BLANKET OR CARDBOARD  
MASKING OR PAINTERS TAPE**

**PARTS INCLUDED**

**QTY 1: FRONT BUMPER ASSEMBLY  
QTY 2: BUMPER L-BRACKETS**

**OPTIONAL PARTS:**

**QTY 1: SKID PLATE  
QTY 2: TRIANGULAR CRASH BAR INSERT  
QTY 1: BUMPER HOOP**

## **HARDWARE INCLUDED:**

### **Bumper hardware:**

**QTY 4 - 3/8"x1" BOLT GRADE 8**  
**QTY 4 - 3/8" FLAT WASHER**  
**QTY 8 - 1/2" NYLOCK NUT GRADE 8**  
**QTY 8 - 1/2" FLAT WASHER**  
**QTY 10 - PLASTIC HOOP CAPS**

## **HARDWARE FOR OPTIONS:**

### **Skid plate:**

**QTY 12 - 3/8"x1" BOLT GRADE 8**  
**QTY 12 - 3/8" LOCK WASHER**  
**QTY 12 - 3/8" FLAT WASHER**

### **Bumper Hoop:**

**QTY 10 - 3/8"x1" HEX DRIVE FLAT HEAD SCREW**  
**QTY 10 - SERRATED FLANGE NUTS**

## **Step 1:**

**Remove the factory or current front bumper assembly, winch, lights, or other accessories.**

**If no winch is being installed, skip to Step 2.**

**If installing a winch, the frame horns may need to be modified. Measure the overall width of your winch and compare to the existing space between the frame horns. If the winch is wider than the gap, the frame horns will need to be modified for the winch to fit correctly in the bumper.**

**Example: In the photos below, the frame horns were modified to fit a Warn Zeon 12-S winch.**

**Cut the frame horns as necessary, ensuring the mounting holes on the frame are not damaged and still leave sufficient mounting surface for the hardware.**



## **Step 2:**

**If you're not installing a skid plate with your bumper, continue to step 4.**

**Insert the supplied triangular crash bar insert into the bottom of the front crash bars. The photo below shows the orientation of the crash bar insert once it is in place, but it must be mounted to the inside of the crash bar.**

**Using the supplied 3/8" x 1" Grade 8 bolts, thread in the top bolts on each side only. Tighten down with a 1/2" ratchet and 9/16" socket.**

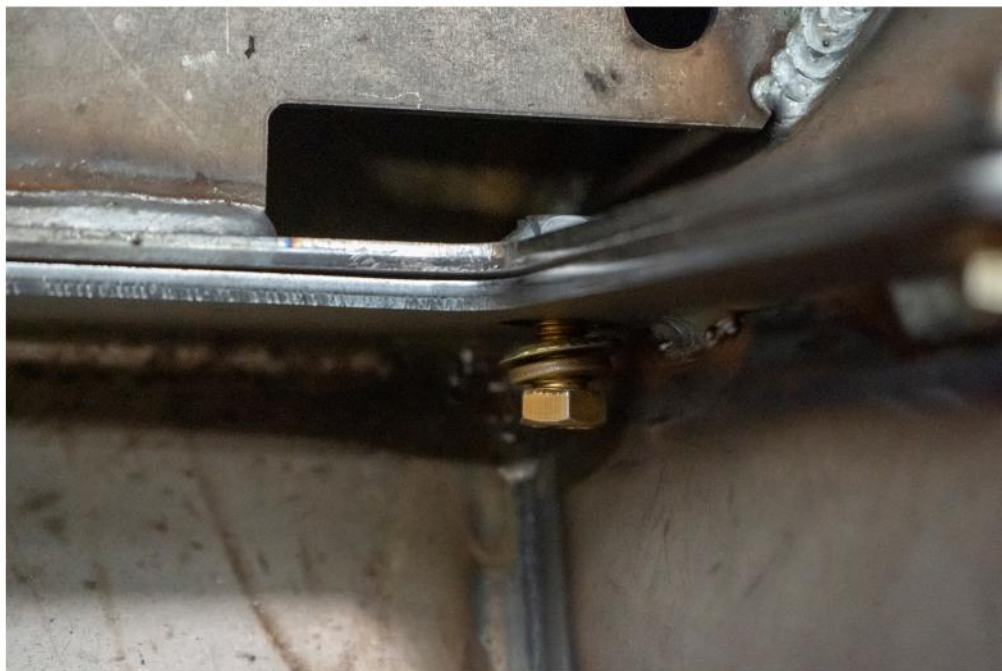




### **Step 3:**

**Position the skid plate below the bumper, matching up the six mounting holes between them.**

**Using the supplied 3/8" x 1" Grade 8 bolts, 3/8" flat washers, and 3/8" lock washers, and 3/8" nylock nuts, fasten the skid plate to the bumper. Tighten down each bolt ensuring a solid fit.**



**Step 4:**

**Position the bumper (and skid, if installed) onto the frame, making sure the four studs on each side go through the factory holes in the frame horns.**

**Secure the bumper to the frame horns by threading the supplied 1/2" nylock nuts to the four studs on each side of the bumper. Begin by finger tightening.**

**Using the supplied 3/8" x 1" grade 8 bolts and flat washers, mount the supplied L-brackets to the holes in the bumper. Finger tighten only.**

**Adjust the bumper as necessary to install the supplied 3/8" x 1" grade 8 bolts and flat washers through the top of each L-bracket, and into the factory threaded holes in the side of the frame rails.**

**Once all the hardware is in place, proceed to tighten everything down with a 1/2" ratchet wrench and 3/4" and 9/16" sockets/wrenches.**



### Step 5:

If you installed a skid plate, use the supplied 3/8" x 1" grade 8 bolts to secure the skid plate brackets with slotted holes to the frame by threading them through the triangular crash bar threaded insert you installed earlier.

Once the bumper is secured to the frame, you can begin installing your winch, and any auxiliary lighting to it. We advise using masking or painters tape along the edge of the winch area to avoid scratching the powder coat while installing your winch.



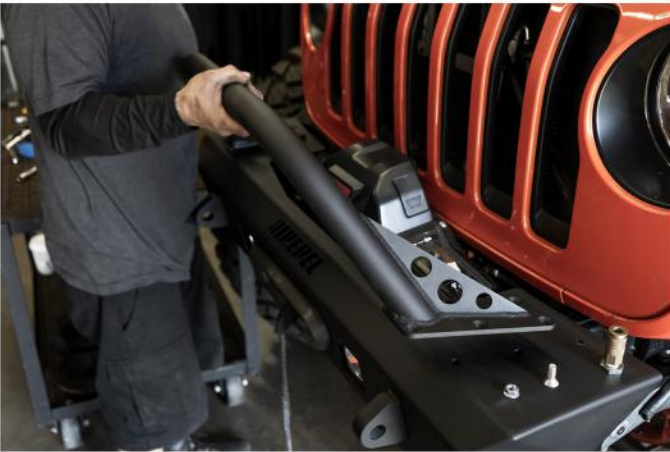


### **Step 6:**

**If you purchased the stinger hoop, you can begin the installation by orienting the hoop mounting surface to the corresponding holes on the top plate of the bumper.**

**Using the supplied recessed 3/8" hex drive flat head screws and serrated flange nuts, secure the stinger hoop to the bumper through all 10 holes. Finger tighten at first, then tighten down fully with a 5.5mm hex key and 9/16 wrench when all hardware is in place and hoop is adjusted correctly.**

**If not installing a stinger hoop, push the supplied black plastic plugs into hoop mounting holes.**



**We hope you enjoy your new Rebel Off Road Summit Series Front Bumper!**

**For a complete list of other Jeep armor we offer, please visit us at [www.RebelOffRoad.com](http://www.RebelOffRoad.com)**



**Be sure to REVIEW this product on our website, and tag @rebeloffroad in any of your social media posts using your new Summit Series Rear Bumper!**